

RT17 (A340)

PARTS CATALOG

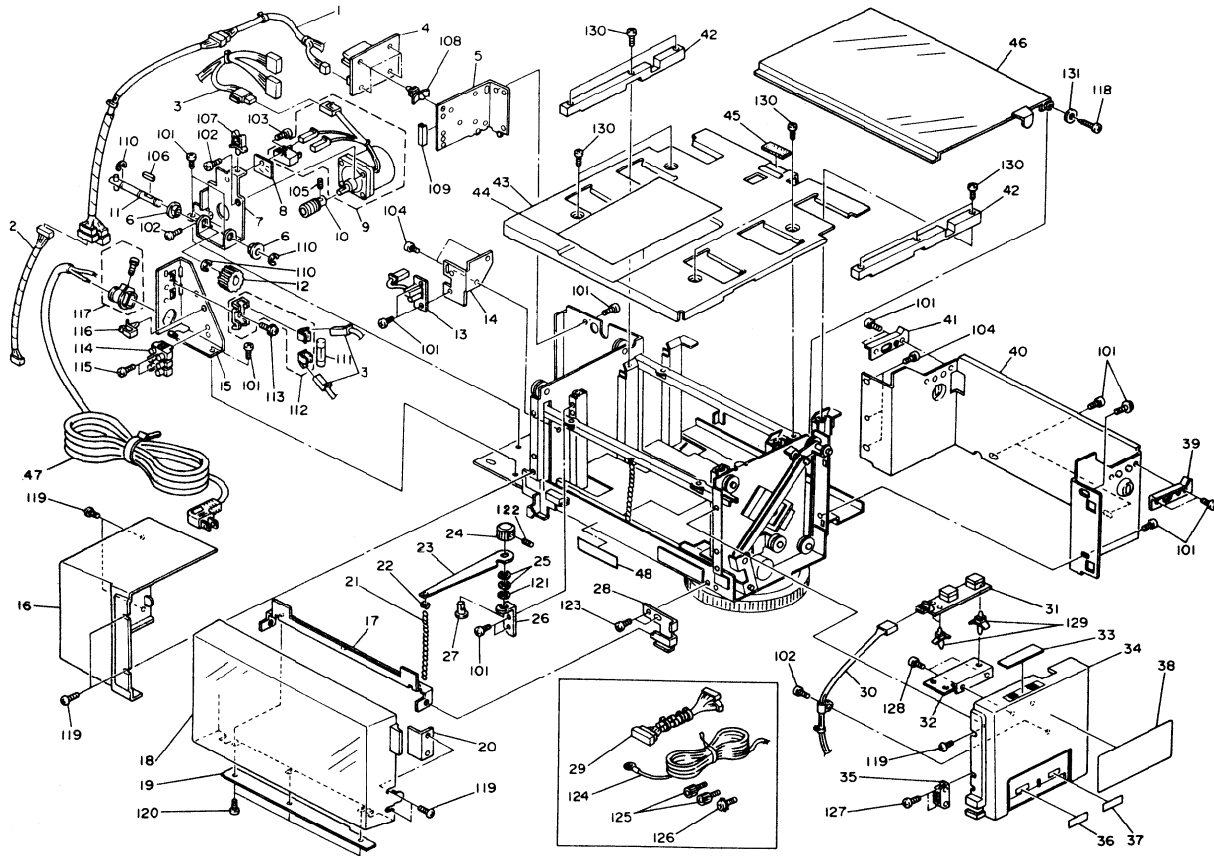
INTRODUCTION

This chapter instructs you the numbers and names of these parts on this machine.

INDEX to PARTS CATALOG

1. EXTERIOR (A340)	2
2. FRAME (A340)	5
3. DECAL AND DOCUMENT (A340)	7
Parts Index	9

1. EXTERIOR (A340)



1. EXTERIOR (A340)

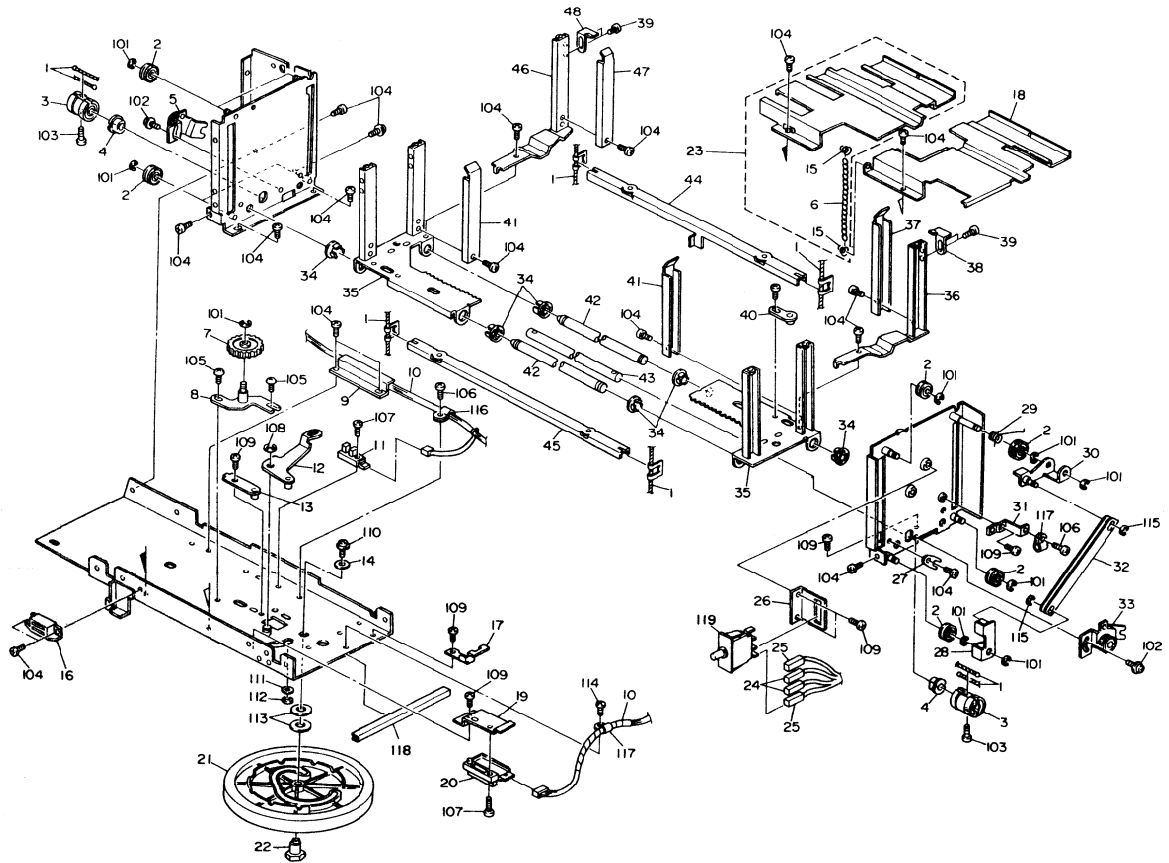
Index No.	Part No.	Description	Q'ty per Assembly
1	A340 5207	DC Relay Harness	1
2	A340 5208	Relay Harness	1
3	A340 5225	AC Harness	1
4	A340 5103	Main Control Board	1
5	A340 2265	Main Control Board Bracket	1
6	5053 0223	Bushing - 8mm	2
7	A340 1351	Main Motor Bracket	1
8	A340 1499	Insulating Sheet	1
9	5446 5411	Tray Drive Motor - AC7/8W 60Hz	1
9	5446 5412	Tray Drive Motor - AC7/8W 50Hz	1
10	5897 1352	Worm Gear - M5x5	1
11	5925 2237	Drive Gear Shaft	1
12	5446 2702	Gear - 22T	1
13	A340 5106	Lightning Arrester Board - LT	1
13	A340 5107	Lightning Arrester Board - A4	1
14	A340 2972	Lighting Arrester Board Bracket	1
15	A340 2266	Power Supply Code Bracket	1
16	A340 2592	Rear Cover	1
17	5925 2233	Side Cover Plate	1
18	A340 2632	Side Cover - LT	1
18	A340 2633	Side Cover - A4	1
19	A340 2331	Holder - Side Cover	1
20	5925 2334	Plate - Magnet Catch	1
21	5897 1490	Stopper Chain	1
22	A340 1488	Hook	3
23	A340 1485	Rear Paper Guide Lever	1
24	A340 1482	Rear Paper Guide Nob	1
25	5443 2713	Wave Washer	2
26	A340 1487	Rear Paper Guide Bracket	1
27	A340 1489	Rear Paper Guide Pin	1
28	A340 2204	Left Cover Support Plate	1
29	A340 5215	LCT Relay Harness	1
30	A340 5209	Operation Board Harness	1
31	A340 5010	Operation Board	1
32	5897 1272	Operation Board Mounting Bracket	1

Index No.	Part No.	Description	Q'ty per Assembly
33	A340 2596	Operation Skin	1
34	A340 2591	Front Cover	1
35	5054 0536	Magnet Catch Ass'y	1
36	A912 2594	Decal - Increase Size	1
37	A912 2595	Decal - Decrease Size	1
38	A340 2611	Decal - Operation	1
39	A340 2565	Front Mounting Plate	1
40	A340 3551	Right Cover	1
41	A340 2566	Rear Mounting Plate	1
42	A340 2573	Side Guide Grip	2
43	A340 2580	Tray Bottom Plate	1
44	A340 2582	Decal - Paper Size	1
45	5447 2927	Friction Pad - B	1
46	A340 2622	Top Cover	1
47	6769 7930	Power Supply Code - 115V	1
47	5408 7968	Power Supply Code - 220/240V	1
48	AA00 0122	Decal - Power Code Caution	1

Index No.	Part No.	Description	Q'ty per Assembly
101	0434 0060W	Tapping Screw - M4x6	
102	0315 0080W	Philips Pan Head Screw - M5x8	
103	0314 0080W	Philips Pan Head Screw - M4x8	
104	0314 0040W	Philips Pan Head Screw - M4x4	
105	0575 0050E	Hexagon Headless Set Screw - M5x5	
106	0930 0400	Parallel Key	
107	1105 0108	Nylon Clip	
108	1106 0336	Nylon Stud	
109	1005 0383	Edging - B	
110	0720 0060E	Retaining ring - M6	
111	1107 0271	Fuse - 3A	
112	1104 0323	Fuse Holder	
113	0951 3008W	Philips Screw With Flat Washer-M3x8	
114	1101 0359	Terminal - 3P	
115	0313 0140W	Philips Pan Head Screw - M3x14	
116	1105 0200	Clamp	
117	1106 0442	Cord Stopper - 220/240V	
118	0802 5110	Screw - M2.6x6	
119	0802 5094	Tapping Truss Head Screw - M4x8	
120	0964 4008W	Tapping Screw With Flat Washer-M4x8	
121	0700 0060B	Washer - 6mm	
122	0574 0050E	Hexagon Headless Set Screw - M4x5	
123	0314 0050B	Philips Pan Head Screw -M4x5	
124	1802 2800	Grounding Wire	
125	0803 0017	Knob Screw - M4x6.5	
126	0801 1185	Philips Truss Head Screw - M4x8	
127	0434 0100W	Tapping Screw - M4x10	
128	0314 0060W	Philips Pan Head Screw - M4x6	
129	1102 0895	Nylon Stud	
130	0313 0060W	Philips Pan Head Screw - M3x6	
131	0807 1088	Washer - 2.8x9	

Index No.	Part No.	Description	Q'ty per Assembly

2. FRAME (A340)



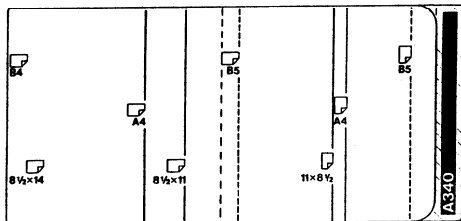
2. FRAME (A340)

Index No.	Part No.	Description	Qty per Assembly
1	5925 2241	Drive Wire	2
2	5446 2620	Idler Pulley - 20Z	6
3	5925 2246	Drive Pulley	2
4	5053 0419	Bushing - 10mm	2
5	5925 2251	Front Wire Tightener	1
6	5925 2258	Stopper Chain	1
7	A340 2657	Gear - 28Z	1
8	A340 4103	Gear Shaft	1
9	A340 1497	Harness Guide Cover	1
10	A340 5207	DC Relay Harness	1
11	5205 5250	LED Sensor Type S	1
12	A340 1473	Size Lever	1
13	5897 4477	Leaf Spring	1
14	5897 1472	Washer - 4.5 X 24 X 2 mm	1
15	5925 2259	Hook	2
16	5054 0536	Magnet Catch Ass'y	1
17	A340 1498	Harness Guide Plate	1
18	A340 3587	Front Inner Cover	1
19	A340 1496	Paper Size Sensor Bracket	1
20	5205 5253	Photointerruptor Pack	1
21	5897 1308	Paper Size Dial	1
22	5925 2235	Dial Shaft	1
23	A340 2140	Rear Inner Cover	1
24	A340 5207	DC Relay Harness	1
25	A340 5225	AC Harness	1
26	A340 1126	Safety Switch Bracket	1
27	5925 2255	Side Guide Stopper	2
28	A340 1226	Safety Switch Actuator	1
29	AA06 6138	Upper Cover Spring	1
30	5897 1274	Upper Actuator Lever	1
31	A340 1125	Harness Bracket	1
32	5897 1279	Safety Switch Rod	1
33	5925 2253	Rear Wire Tightener	1
34	5897 1455	Bushing	6
35	A340 4451	Front Side Guide	2

Index No.	Part No.	Description	Qty per Assembly
36	A912 3640	Front Guide Post	1
37	A340 3647	Spring Plate - Front Side Post	1
38	A912 3575	Front Paper Guide	1
39	A912 3577	Shoulder Screw - M3	4
40	5897 4153	Bracket - Size Shaft	1
41	A912 2648	Spring Plate - Size Post	2
42	5925 2249	Side Guide Shaft	2
43	5925 2247	Drive Shaft	1
44	5925 2257	Left Lift Stay	1
45	5897 1372	Right Lift Rod	1
46	A912 3641	Rear Guide Post	1
47	A340 3646	Spring Plate - Rear Side Post	1
48	A912 3576	Rear Paper Guide	1
101	0720 0040E	Retaining Ring - M4	
102	0964 4006W	Tapping Screw With Flat Washer-M4x6	
103	0314 0120W	Philips Pan Head Screw - M4x12	
104	0434 0060W	Tapping Screw - M4x6	
105	0951 4006W	Philips Screw With Flat Washer-M4x6	
106	0414 0080W	Tapping Screw - M4x8	
107	0314 0100W	Philips Pan Head Screw - M4x10	
108	0720 0060E	Retaining Ring - M6	
109	0314 0040W	Philips Pan Head Screw - M4x4	
110	0965 4010W	Tapping Screw With Flatwasher-M4x10	
111	G010 1601	Washer - M8	
112	0720 0070E	Retaining Ring - M7	
113	0807 7071	Flat Washer - M11	
114	0344 0050F	Philips Truss Head Screw - M4x5	
115	0720 0030E	Retaining Ring - M3	
116	1105 0009	Nylon Clip - 5N	
117	1105 0016	Nylon Clip - 4N	
118	1005 0383	Edging - B	
119	1204 1280	Push Switch	

3. DECAL AND DOCUMENT (A340)

1



2

Loading Paper

- Press button to lower the tray. The button will blink while tray is moving down.
- After it stops blinking open the cover.
- Move the stopper chain out of the way and load paper.
- If you change paper size remove the paper in the tray turn the dial to the appropriate size.
- After loading the paper reposition the stopper chain so that it touches the edge of the paper stack. Close the cover.

Note: Make sure the stopper chain does not rest of top on the paper stack. This could cause a misfeed.

3



6

CAUTION

THIS UNIT HAS MORE THAN ONE POWER-SUPPLY CORD. DISCONNECT TWO POWER-SUPPLY CORDS BEFORE SERVICING TO AVOID ELECTRICAL SHOCK.

Attention : This machine is set for 220V/50Hz.
Achtung : Dieses Gerät ist auf 220V/50Hz eingestellt.

7

4



ATTENTION

CET APP. REÇUT COMPORTE PLUS D'UN CORDON D'ALIMENTATION. AFIN DE PRÉVENIR LES CHOCs ÉLECTRIQUES, DÉ BRANCHER LES DEUX CORDONS D'ALIMENTATION AVANT LE DÉPANNAGE.

#P205HS HS (S)

INSTALLATION PROCEDURE

5

See installation instructions before connecting to the supply	Ver Anschluß an das Netz Aufstellanleitung beachten?	Consultar la procedura di installazione avant de connecter le copieur.	Por favor, consultar las instrucciones de instalación antes de conectar la fotocopiadora al suministro de corriente eléctrica.	Assicurarsi di aver letto con attenzione i requisiti per l'installazione della copiatrice prima di connetterla alla presa elettrica.
---	--	--	--	--

3. DECAL AND DOCUMENT (A340)

Index No.	Part No.	Description	Q'ty per Assembly
1	A340 2582	Decal - Paper Size	1
2	A340 2611	Decal - Operation	1
3	A912 2594	Decal - Increase Size	1
4	A912 2595	Decal - Decrease Size	1
5	AA00 0122	Decal - Power Code Caution	1
6	5442 1372	Decal - Power Source - 220V	1
6	A912 2681	Caution Decal - English/French	1
7	A340 8610	Installation Procedure - English	1
7	A340 8615	Installation Procedure - Multi	1

Index No.	Part No.	Description	Q'ty per Assembly
-----------	----------	-------------	-------------------

PARTS INDEX

Part No.	Description	Paper and Index No.
A340 1125	Harness Bracket	5- 31
A340 1126	Safety Switch Bracket	5- 26
A340 1226	Safety Switch Actuator	5- 28
A340 1351	Main Motor Bracket	3- 7
A340 1473	Size Lever	5- 12
A340 1482	Rear Paper Guide Nob	3- 24
A340 1485	Rear Paper Guide Lever	3- 23
A340 1487	Rear Paper Guide Bracket	3- 26
A340 1488	Hook	3- 22
A340 1489	Rear Paper Guide Pin	3- 27
A340 1496	Paper Size Sensor Bracket	5- 19
A340 1497	Harness Guide Cover	5- 9
A340 1498	Harness Guide Plate	5- 17
A340 1499	Insulating Sheet	3- 8
A340 2140	Rear Inner Cover	5- 23
A340 2204	Left Cover Support Plate	3- 28
A340 2265	Main Control Board Bracket	3- 5
A340 2266	Power Supply Code Bracket	3- 15
A340 2331	Holder - Side Cover	3- 19
A340 2565	Front Mounting Plate	3- 39
A340 2566	Rear Mounting Plate	3- 41
A340 2573	Side Guide Grip	3- 42
A340 2580	Tray Bottom Plate	3- 43
A340 2582	Decal - Paper Size	3- 44
A340 2582	Decal - Paper Size	7- 1
A340 2591	Front Cover	3- 34
A340 2592	Rear Cover	3- 16
A340 2596	Operation Skin	3- 33
A340 2611	Decal - Operation	3- 38
A340 2611	Decal - Operation	7- 2
A340 2622	Top Cover	3- 46
A340 2632	Side Cover - LT	3- 18
A340 2633	Side Cover - A4	3- 18
A340 2657	Gear - 28Z	5- 7
A340 2972	Lightning Arrester Board Bracket	3- 14

Part No.	Description	Paper and Index No.
A340 3551	Right Cover	3- 40
A340 3587	Front Inner Cover	5- 18
A340 3646	Spring Plate - Rear Side Post	5- 47
A340 3647	Spring Plate - Front Side Post	5- 37
A340 4103	Gear Shaft	5- 8
A340 4451	Front Side Guide	5- 35
A340 5010	Operation Board	3- 31
A340 5103	Main Control Board	3- 4
A340 5106	Lightning Arrester Board - LT	3- 13
A340 5107	Lightning Arrester Board - A4	3- 13
A340 5207	DC Relay Harness	3- 1
A340 5207	DC Relay Harness	5- 10
A340 5207	DC Relay Harness	5- 24
A340 5208	Relay Harness	3- 2
A340 5209	Operation Board Harness	3- 30
A340 5215	LCT Relay Harness	3- 29
A340 5225	AC Harness	3- 3
A340 5225	AC Harness	5- 25
A340 8610	Installation Procedure - English	7- 7
A340 8615	Installation Procedure - Multi	7- 7

Part No.	Description	Paper and Index No.
AA00 0122	Decal - Power Code Caution	3- 48
AA00 0122	Decal - Power Code Caution	7- 5
AA06 6138	Upper Cover Spring	5- 29
A912 2594	Decal - Increase Size	3- 36
A912 2594	Decal - Increase Size	7- 3
A912 2595	Decal - Decrease Size	3- 37
A912 2595	Decal - Decrease Size	7- 4
A912 2648	Spring Plate - Size Post	5- 41
A912 2681	Caution Decal - English/French	7- 6
A912 3575	Front Paper Guide	5- 38
A912 3576	Rear Paper Guide	5- 48
A912 3577	Shoulder Screw - M3	5- 39
A912 3640	Front Guide Post	5- 36
A912 3641	Rear Guide Post	5- 46
G010 1601	Washer - M8	5-111
5053 0223	Bushing - 8mm	3- 6
5053 0419	Bushing - 10mm	5- 4
5054 0536	Magnet Catch Ass'y	3- 35
5054 0536	Magnet Catch Ass'y	5- 16
5205 5250	LED Sensor Type S	5- 11
5205 5253	Photointerruptor Pack	5- 20
5408 7968	Power Supply Code - 220/240V	3- 47
5442 1372	Decal - Power Source - 220V	7- 6
5443 2713	Wave Washer	3- 25
5446 2620	Idler Pulley - 20Z	5- 2
5446 2702	Gear - 22T	3- 12
5446 5411	Tray Drive Motor - AC7/8W 60Hz	3- 9
5446 5412	Tray Drive Motor - AC7/8W 50Hz	3- 9
5447 2927	Friction Pad - B	3- 45
5897 1272	Operation Board Mounting Bracket	3- 32
5897 1274	Upper Actuator Lever	5- 30
5897 1279	Safety Switch Rod	5- 32
5897 1308	Paper Size Dial	5- 21
5897 1352	Worm Gear - M5x5	3- 10
5897 1372	Right Lift Rod	5- 45

Part No.	Description	Paper and Index No.
5897 1455	Bushing	5- 34
5897 1472	Washer - 4.5 X 24 X 2 mm	5- 14
5897 1490	Stopper Chain	3- 21
5897 4153	Bracket - Size Shaft	5- 40
5897 4477	Leaf Spring	5- 13
5925 2233	Side Cover Plate	3- 17
5925 2235	Dial Shaft	5- 22
5925 2237	Drive Gear Shaft	3- 11
5925 2241	Drive Wire	5- 1
5925 2246	Drive Pulley	5- 3
5925 2247	Drive Shaft	5- 43
5925 2249	Side Guide Shaft	5- 42
5925 2251	Front Wire Tightener	5- 5
5925 2253	Rear Wire Tightener	5- 33
5925 2255	Side Guide Stopper	5- 27
5925 2257	Left Lift Stay	5- 44
5925 2258	Stopper Chain	5- 6
5925 2259	Hook	5- 15
5925 2334	Plate - Magnet Catch	3- 20
6769 7930	Power Supply Code - 115V	3- 47

Part No.	Description	Paper and Index No.
0313 0060W	Philips Pan Head Screw - M3x6	3-130
0313 0140W	Philips Pan Head Screw - M3x14	3-115
0314 0040W	Philips Pan Head Screw - M4x4	3-104
0314 0040W	Philips Pan Head Screw - M4x4	5-109
0314 0050B	Philips Pan Head Screw -M4x5	3-123
0314 0060W	Philips Pan Head Screw - M4x6	3-128
0314 0080W	Philips Pan Head Screw - M4x8	3-103
0314 0100W	Philips Pan Head Screw - M4x10	5-107
0314 0120W	Philips Pan Head Screw - M4x12	5-103
0315 0080W	Philips Pan Head Screw - M5x8	3-102
0344 0050F	Philips Truss Head Screw - M4x5	5-114
0414 0080W	Tapping Screw - M4x8	5-106
0434 0060W	Tapping Screw - M4x6	3-101
0434 0060W	Tapping Screw - M4x6	5-104
0434 0100W	Tapping Screw - M4x10	3-127
0574 0050E	Hexagon Headless Set Screw - M4x5	3-122
0575 0050E	Hexagon Headless Set Screw - M5x5	3-105
0700 0060B	Washer - 6mm	3-121
0720 0030E	Retaining Ring - M3	5-115
0720 0040E	Retaining Ring - M4	5-101
0720 0060E	Retaining ring - M6	3-110
0720 0060E	Retaining Ring - M6	5-108
0720 0070E	Retaining Ring - M7	5-112
0801 1185	Philips Truss Head Screw - M4x8	3-126
0802 5094	Tapping Truss Head Screw - M4x8	3-119
0802 5110	Screw - M2.6x6	3-118
0803 0017	Knob Screw - M4x6.5	3-125
0807 1088	Washer - 2.8x9	3-131
0807 7071	Flat Washer - M11	5-113
0930 0400	Parallel Key	3-106
0951 3008W	Philips Screw With Flat Washer-M3x8	3-113
0951 4006W	Philips Screw With Flat Washer-M4x6	5-105
0964 4006W	Tapping Screw With Flat Washer-M4x6	5-102
0964 4008W	Tapping Screw With Flat Washer-M4x8	3-120
0965 4010W	Tapping Screw With Flatwasher-M4x10	5-110

Part No.	Description	Paper and Index No.
1005 0383	Edging - B	3-109
1005 0383	Edging - B	5-118
1101 0359	Terminal - 3P	3-114
1102 0895	Nylon Stud	3-129
1104 0323	Fuse Holder	3-112
1105 0009	Nylon Clip - 5N	5-116
1105 0016	Nylon Clip - 4N	5-117
1105 0108	Nylon Clip	3-107
1105 0200	Clamp	3-116
1106 0336	Nylon Stud	3-108
1106 0442	Cord Stopper - 220/240V	3-117
1107 0271	Fuse - 3A	3-111
1204 1280	Push Switch	5-119
1802 2800	Grounding Wire	3-124